

EXPLOSION PROOF PRESSURE TRANSDUCER

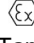
Designed and configured for natural gas AMI systems, the GaugeZone Explosion Proof Pressure Transducer makes collecting additional data points extremely economical.

Features:

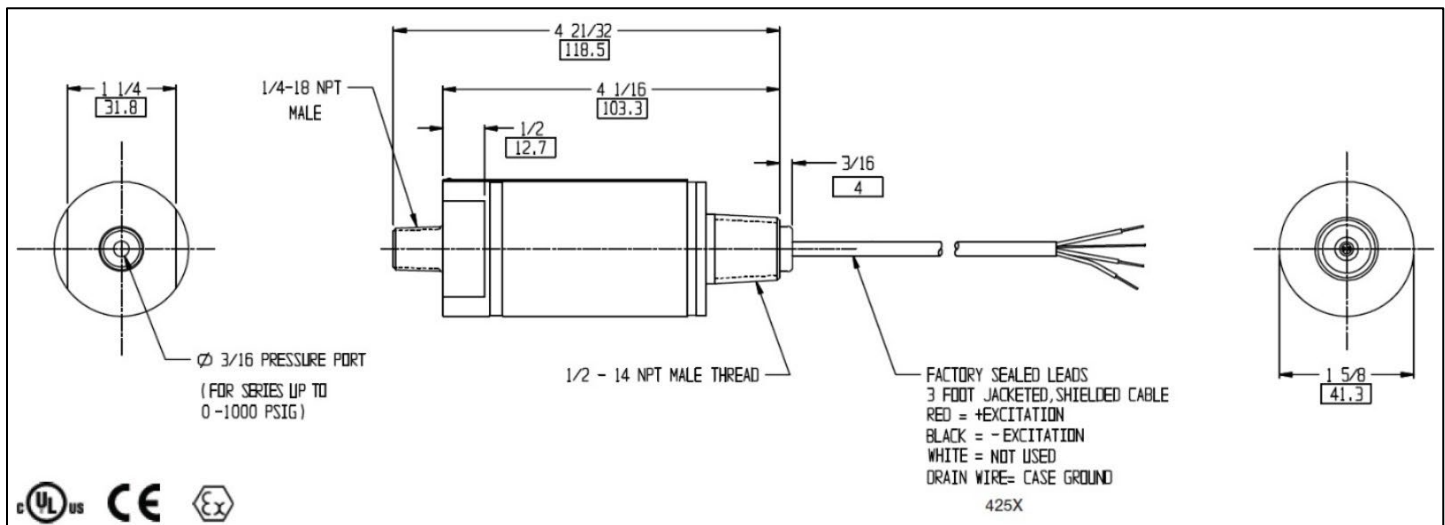
- Lightweight
- Compact footprint
- High accuracy 0.25%
- Many pressure ranges available
- Rugged, stainless-steel construction



Specifications (425X Series):

Accuracy (LH & R)	±0.25% BSL (±0.5% for vacuum only [-23])
Long Term Stability	±0.5% FSO of calibration curve
Typical Life Cycle	100 million cycles
Proof Pressure	2 times rated pressure or 13,000 psi max., whichever is less
Input	Excitation voltage: 12 to 28 VDC
Output	Output: 4 to 20 mA Full scale output: 16 mA ± 1% Zero output: 4 mA ± 2%
Enclosure	NEMA 4, 300 series stainless steel
Pressure Connection	1/4"-18 NPT male
Electrical Connection	2 conductor, 24 awg, PVC jacketed, shielded cable, 6 ft. (2 m) long with integral strain relief and case ground (standard).
Temperature Ranges	Operating: -40° to 185°F (-40° to 85)°C Compensated: 30° to 160°F (-1° to 71)°C Storage: -40° to 185°F (-40° to 85)°C
Temperature Shift	Zero & Span: 0.0125% per °F over compensated range 75°F reference
Approvals	cULus approved as telemetering equipment for use in hazardous locations (UL File E146589, WYMV, WYMV7) as follows: Class I, Div. 1, Groups A, B, C & D Class II, Groups E, F & G. ATEX/IECEX Certification: CE 0081  II 2 G D, Ex d IIC 91°C (T5) Gb, Ex tb IIIC T100°C Db IP66, -40°C ≤ Tamb ≤ 85°C, DEMKO 04 ATEX 0334369, IECEx UL 13.0036X
Weight	7.4 oz. (210 grams) to 1000 psi 9.4 oz. (266 grams) 2,000 psi and higher
Warranty	1 year warranty
Wiring Code – Milliamp Series	Red Cable: + Excitation Signal Black Cable: - Excitation Signal Bare Cable: Drain Signal

GaugeZone Explosion Proof Pressure Transducer Technical Drawing:



Part Number(s): PT-B-415X-XX-WXXX-Q20

Pressure Range:

- 23 = 0 - 29.9" of Hg
- 01 = 0 - 15 psi
- 21 = 0 - 30 psi
- 22 = 0 - 60 psi
- 03 = 0 - 50 psi
- 04 = 0 - 100 psi**
- 05 = 0 - 150 psi
- 06 = 0 - 200 psi
- 07 = 0 - 300 psi**
- 08 = 0 - 500 psi**
- 19 = 0 - 600 psi
- 10 = 0 - 1,000 psi
- 11 = 0 - 1,500 psi
- 12 = 0 - 2,000 psi
- 13 = 0 - 3,000 psi
- 14 = 0 - 4,000 psi
- 15 = 0 - 5,000 psi
- 16 = 0 - 6,000 psi
- 17 = 0 - 7,500 psi
- 18 = 0 - 10,000 psi

**Bold are common,
in stock part numbers**

Cable Length:

- 072 = 6'
- 360 = 30'

*Additional lengths
available by request*